

# Health Impact Assessment to Engage Communities and Prioritize Action

Sandra Whitehead, PhD MPA

Program Director

Sustainable Urban Planning Program

George Washington University





— EPA Administrator Gina McCarthy listens to

# National Environmental Justice Advisory Committee

---

# SOPHIA Provides

---

Tools and resources at  
[www.hiasociety.org](http://www.hiasociety.org)

---

HIA training

---

Peer support and mentoring

---

Review and evaluation of HIAs

---

Minimum Elements and  
Practice Standards





Society of Practitioners of Health Impact Assessment

## PRACTITIONER WORKSHOP 2021

### Looking Back, Looking Forward

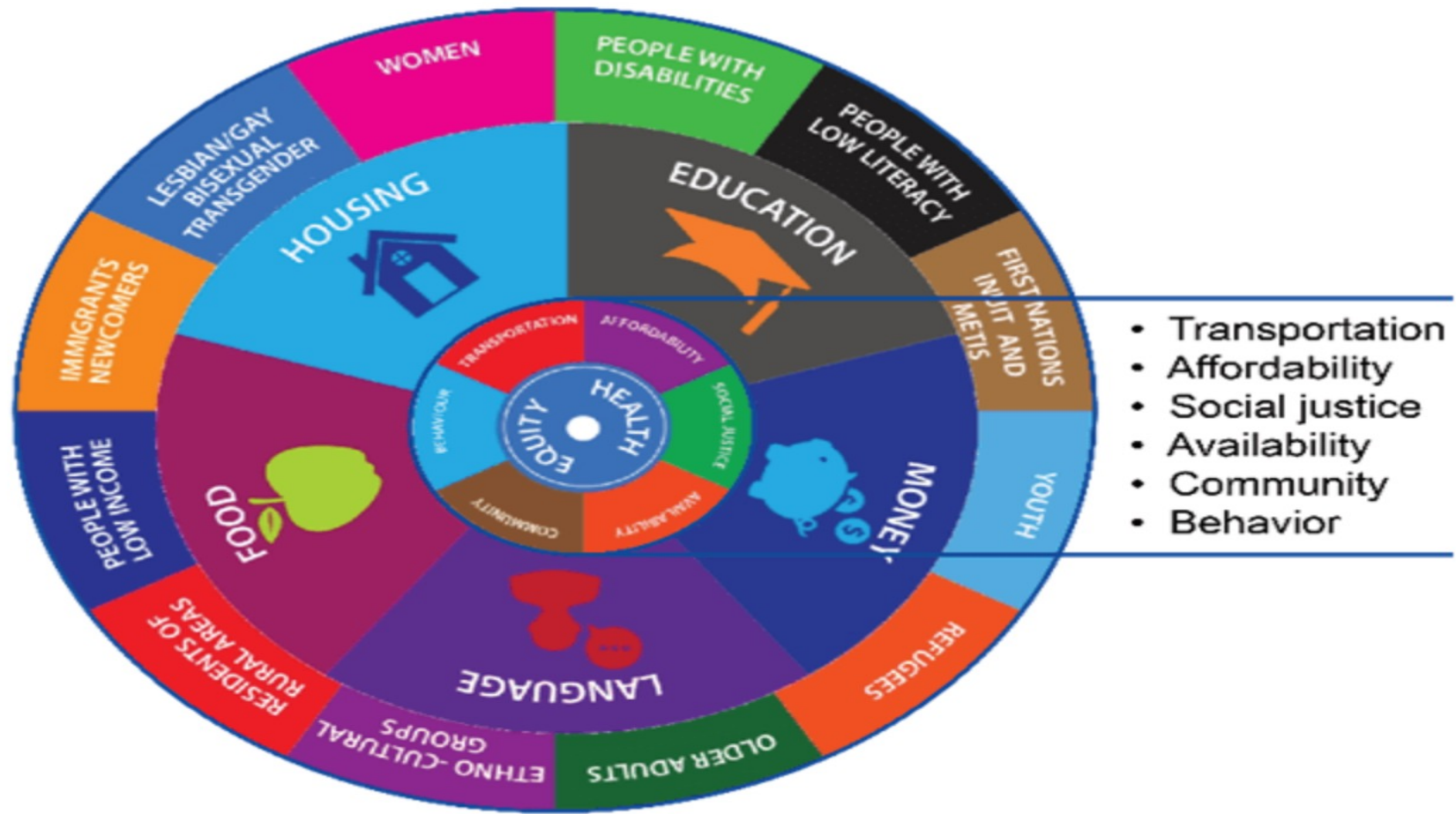
Please [join us](#) for the virtual 2021 SOPHIA Practitioner Workshop!

**Dates:** December 1-2, 2021

**Time:** 11 am – 1 pm ET each day

**Location:** Online (links will be sent starting two weeks before the workshop)

We look forward to seeing you online to explore the evolution of health impact assessment practice over SOPHIA's 10 year history, and explore the future of HIA, HiAP, and implications for SOPHIA.



Source: Moving Health Equity Forward Committee, an action group of the Bruce Grey Poverty Task Force, <https://www.publichealthgreybruce.on.ca/Your-Environment/Healthy-Communities/Health-Equity>

Public health only has the power to address issues within its authority

Communities' most pressing problems stem from a variety of area and require a systematic approach and tools to address them



**HEALTH  
IMPACT  
ASSESSMENT**



## What Values Underpin HIA?

*Democracy*

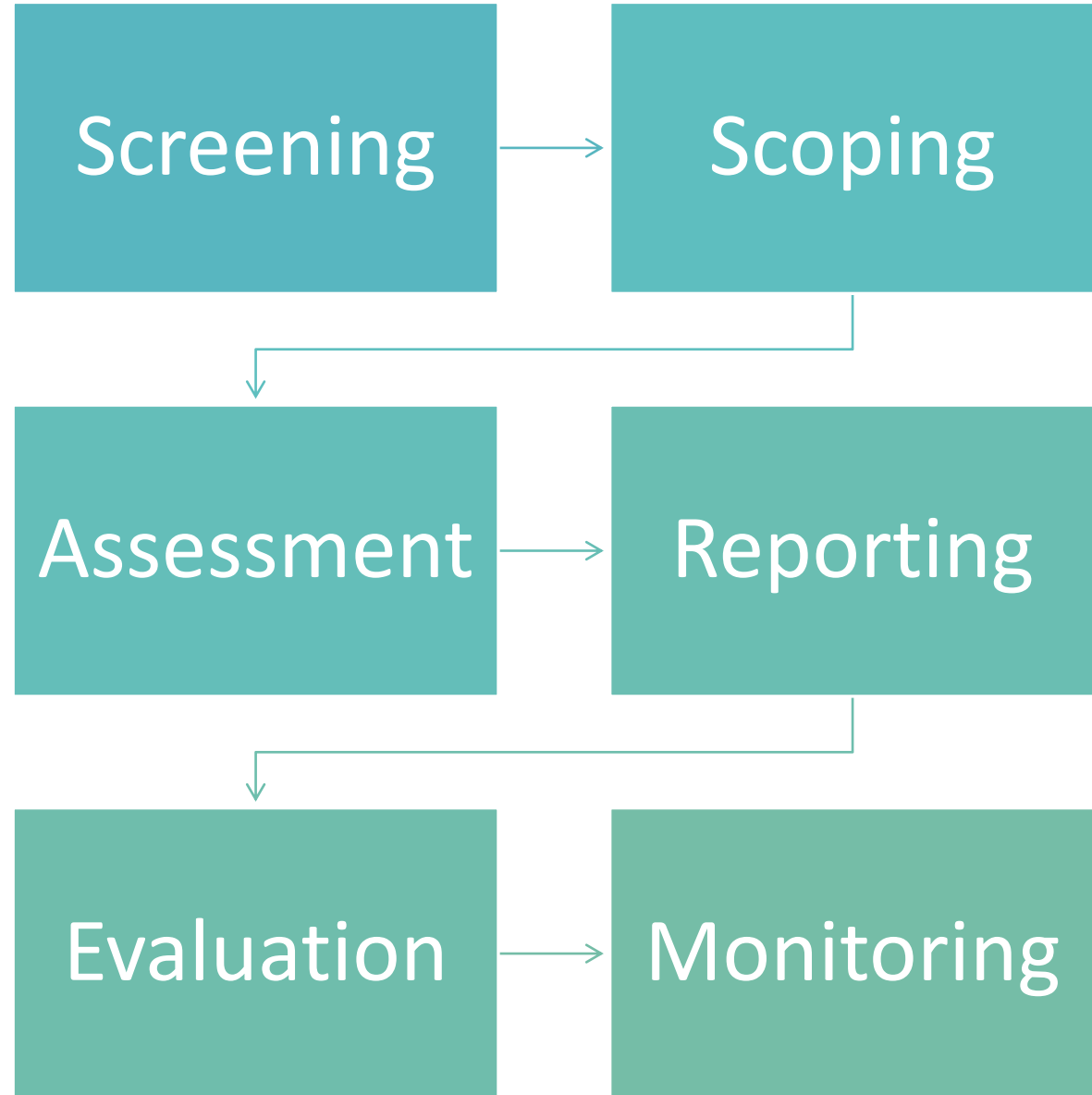
*Equity*

*Increased awareness of health issues*

*Scientific and robust practice*



# Phases of an HIA



01

Identify harms and benefits **before** a decision is made

02

Identify **evidence-based strategies** to reduce harm and enhance benefits

03

Support inclusive and **democratic** decision-making and increase transparency

04

Support **community engagement** and empowerment

05

Advance health equity

Value of HIA

HIA Provides a  
Framework to Solve  
Real Problems

Climate Justice

Legacy of Redlining

Cumulative  
Environmental  
Injustices



Vacant Lots  
Economic  
Opportunity  
Quality  
Education



# Challenges in Using HIA

Defining health issues are not considered during the processes outside of public health

Current indicators fail to consider the full range of benefits from improving health

No external reporting requirements to address equity or report out on changes



Sandra Whitehead, PhD  
MPA

[Swhitehead@gwu.edu](mailto:Swhitehead@gwu.edu)

[National Environmental  
Justice Advisory Council](#)

[Society of Practitioners of  
HIA](#)

[GWU Sustainable Urban  
Planning Program](#)



# Resources for HIA Practice

NEHA: <https://www.neha.org/eh-topics/healthy-homes-0/health-impact-assessments>

NACCHO:  
<http://naccho.org/programs/community-health/chronic-disease/healthy-community-design/health-impact-assessment>

Society of Practitioners of HIA:  
<http://hiasociety.org/>

Health Impact Project (Pew):  
<http://www.pewtrusts.org/en/projects/health-impact-project/health-impact-assessment>

Human Impact Partners:  
<http://www.humanimpact.org/capacity-building/hia-tools-and-resources/>