



SPEED
LIMIT
25

Wine
Special
20% off
cases
Mondays

WEST END
WINE SHOP
COLD BEER

Main Street





USE INSET PARKING



Curb Extension

Inset Parking

Tree Well

IMAGE LOCATON: LAKE
OSWEGO, OREGON

USE INSET PARKING



Inset Parking

Tree Well

IMAGE LOCATON: LAKE
OSWEGO, OREGON

ONE
WAY

THOR
2

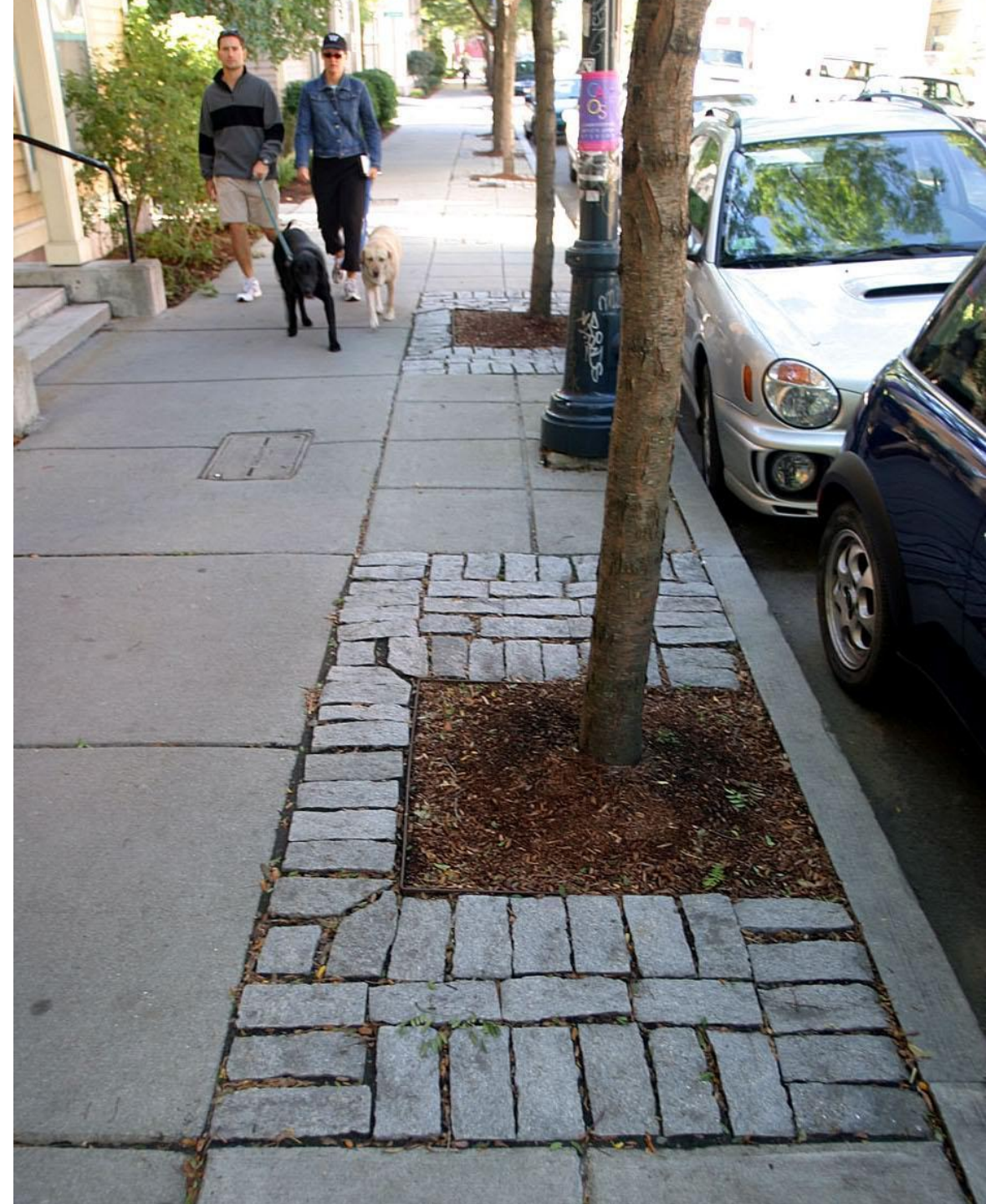




BEDELL & CO.
Fine Antiques
Estate Jewelry

926-LVB









Gateways



Triple canopy of trees

Raised Median

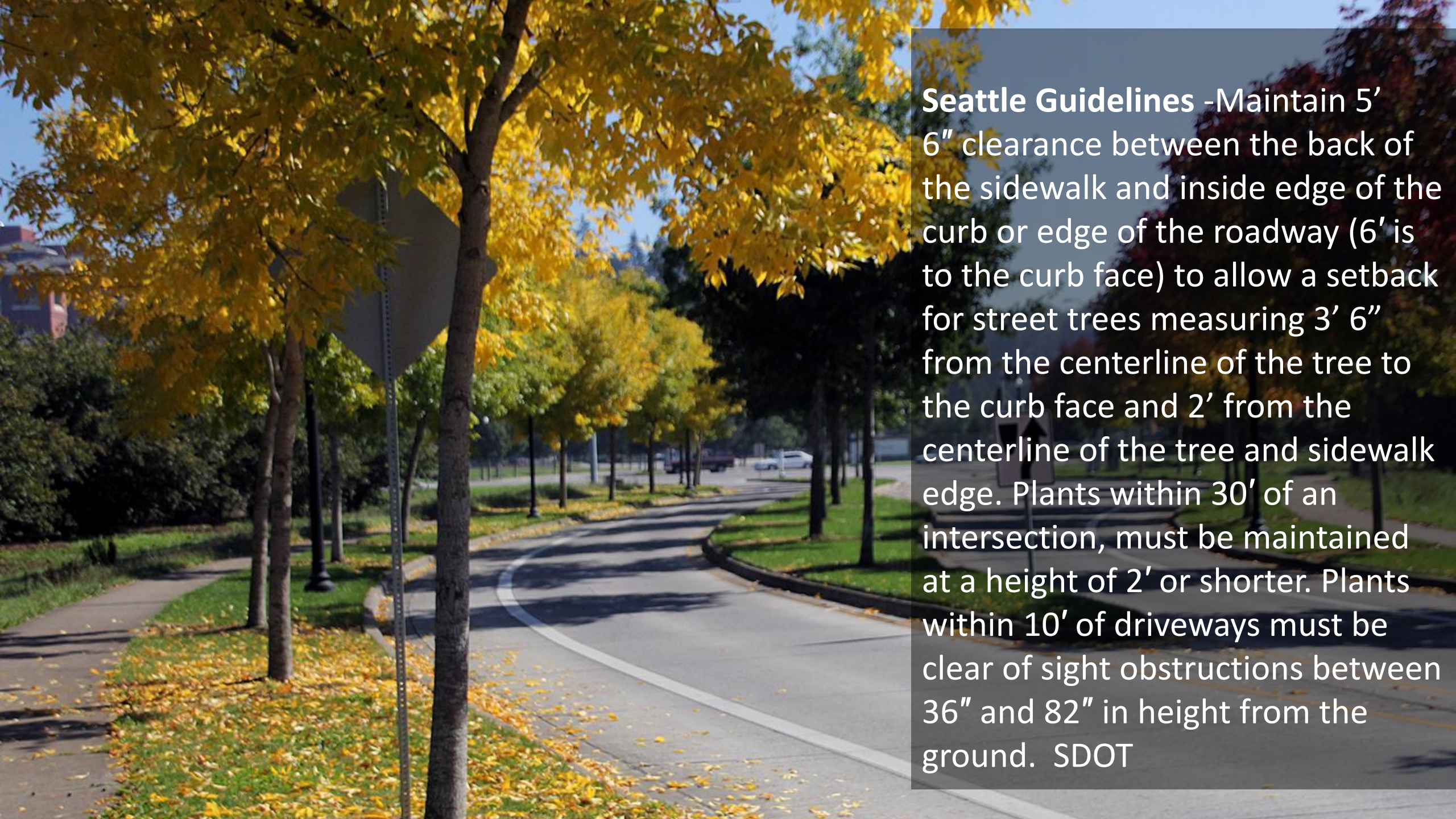
10'
Travel
Lanes

Multi
Use
Trail

Grasscrete





A photograph of a street lined with trees in autumn. The trees have bright yellow and orange leaves. A sidewalk runs along the left side of the road, and a road sign is visible. The scene is bright and clear.

Seattle Guidelines -Maintain 5' 6" clearance between the back of the sidewalk and inside edge of the curb or edge of the roadway (6' is to the curb face) to allow a setback for street trees measuring 3' 6" from the centerline of the tree to the curb face and 2' from the centerline of the tree and sidewalk edge. Plants within 30' of an intersection, must be maintained at a height of 2' or shorter. Plants within 10' of driveways must be clear of sight obstructions between 36" and 82" in height from the ground. SDOT





Savings



CAPITOL

THE WALKER BUILDING 1916





Rural Gateways



Mistakes have been made

The right tree in the right location, and
the right maintenance matter?





Trees At Intersections

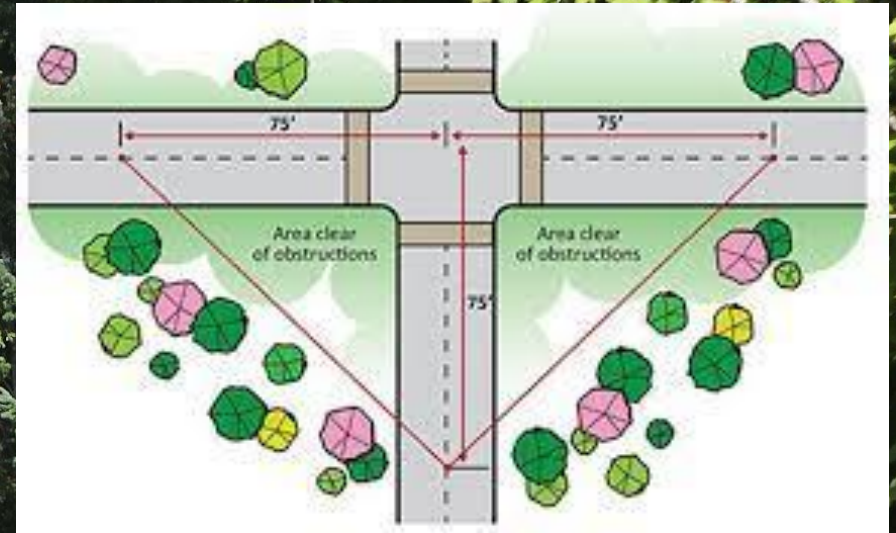
ARE THESE TREES A SAFETY CONCERN?

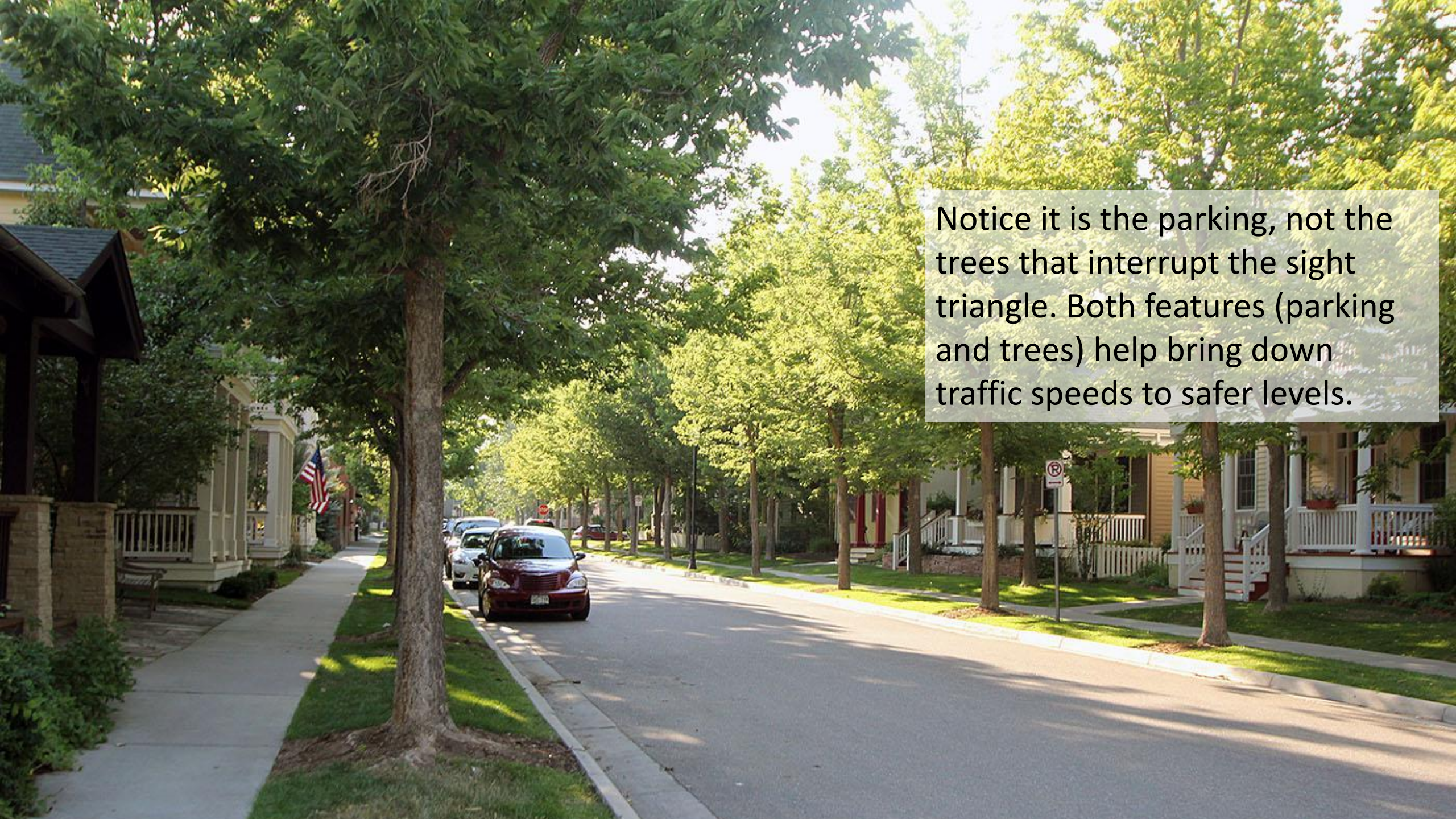


Maintain Clear Sight Triangles

ARE THESE A SAFETY CONCERN?

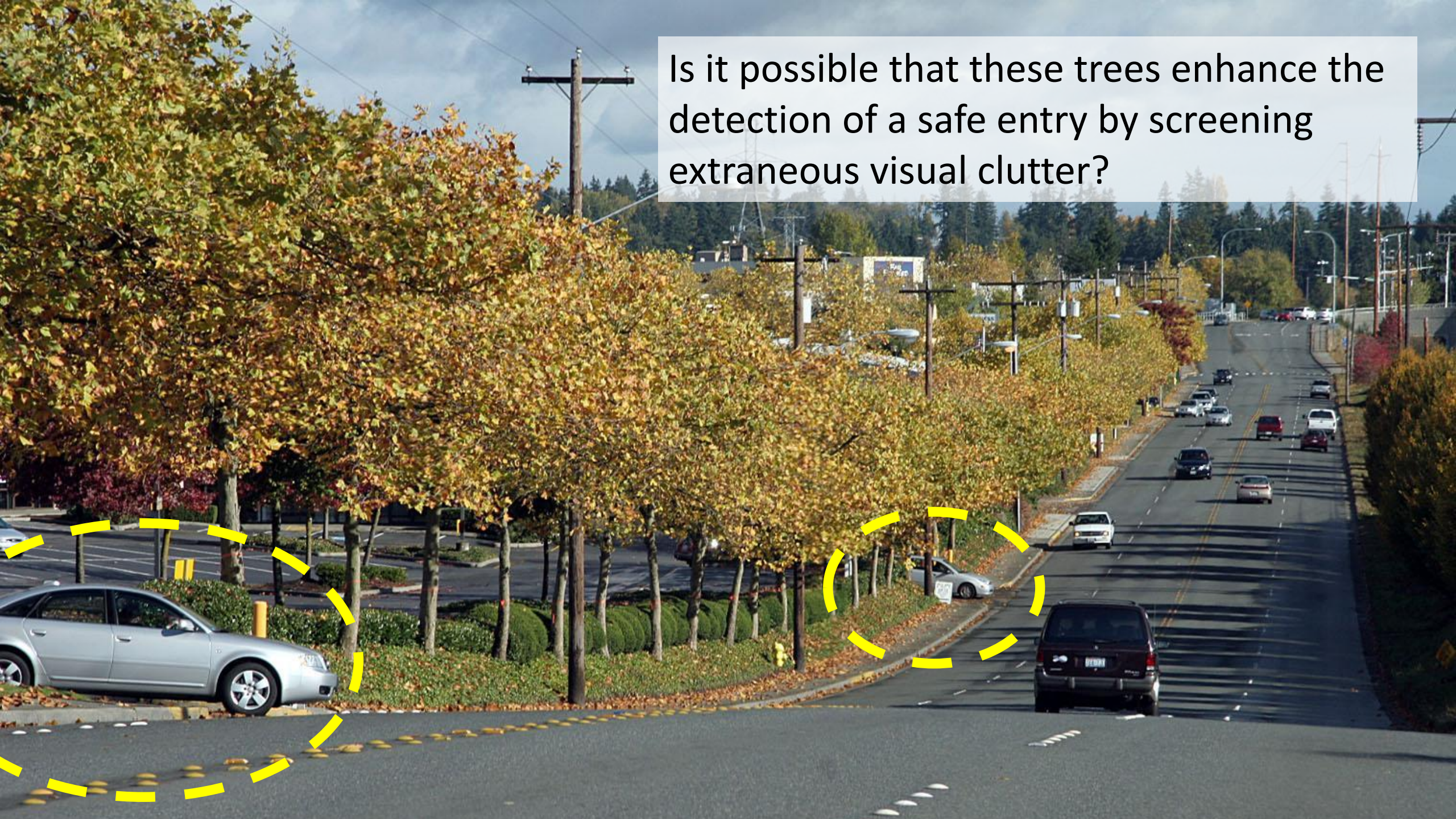




A photograph of a residential street lined with mature trees and houses. A red car is parked on the left side of the road. A text box is overlaid on the right side of the image.

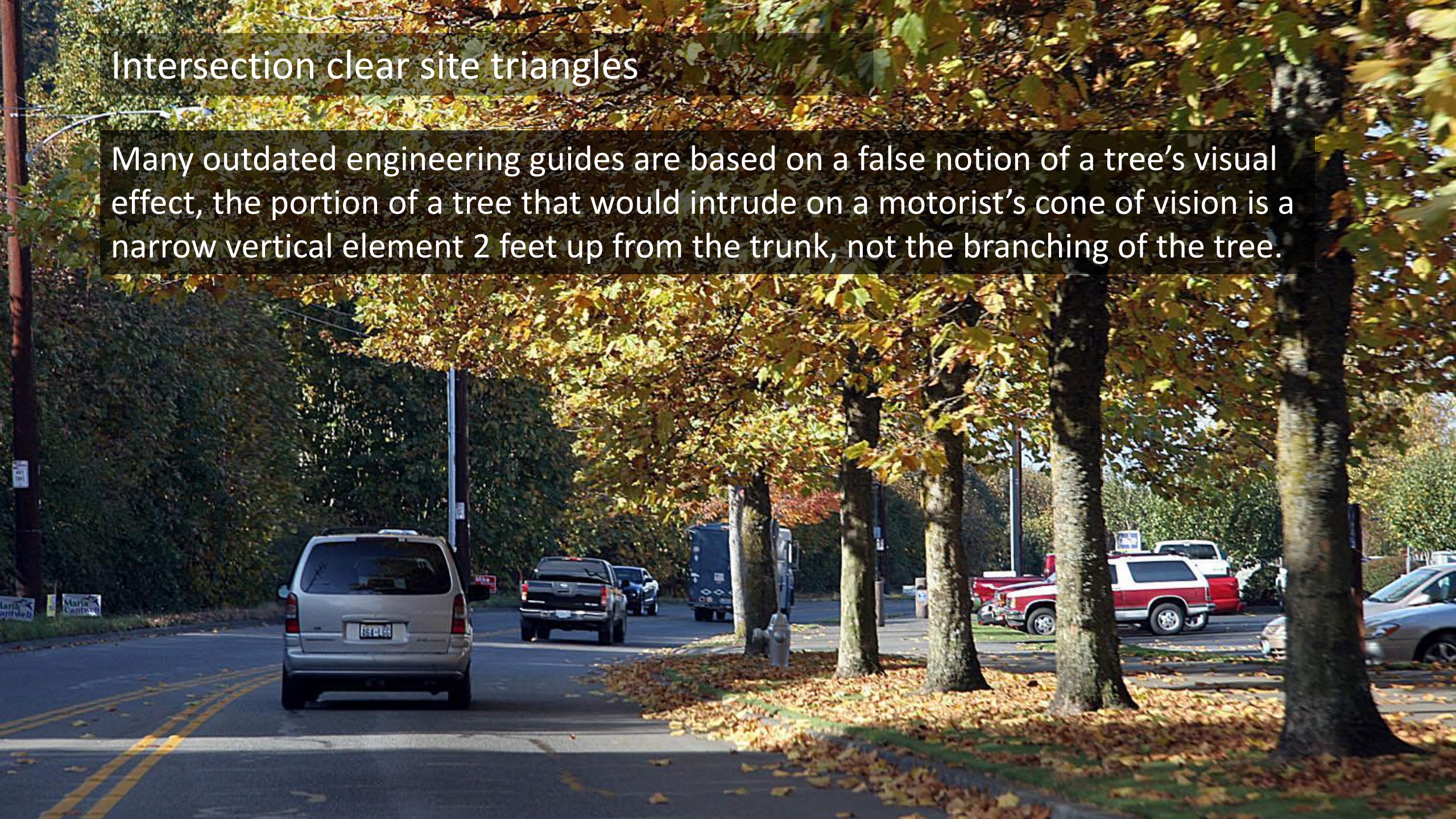
Notice it is the parking, not the trees that interrupt the sight triangle. Both features (parking and trees) help bring down traffic speeds to safer levels.

Is it possible that these trees enhance the detection of a safe entry by screening extraneous visual clutter?



Intersection clear site triangles

Many outdated engineering guides are based on a false notion of a tree's visual effect, the portion of a tree that would intrude on a motorist's cone of vision is a narrow vertical element 2 feet up from the trunk, not the branching of the tree.



Intersection clear site triangles

Engineering policy recommendations regarding clear sight triangles have resulted in vigorous limitations on street trees near intersections but little regulation of other possible obstructing elements. (Street Trees and Intersection Safety)
Closely planted trees at the sidewalk edge create a transparent fence that helps protect pedestrians, psychologically and physically, from moving vehicle traffic on the adjacent roadway (Jacobs et al. 2002).





CROSSWALK

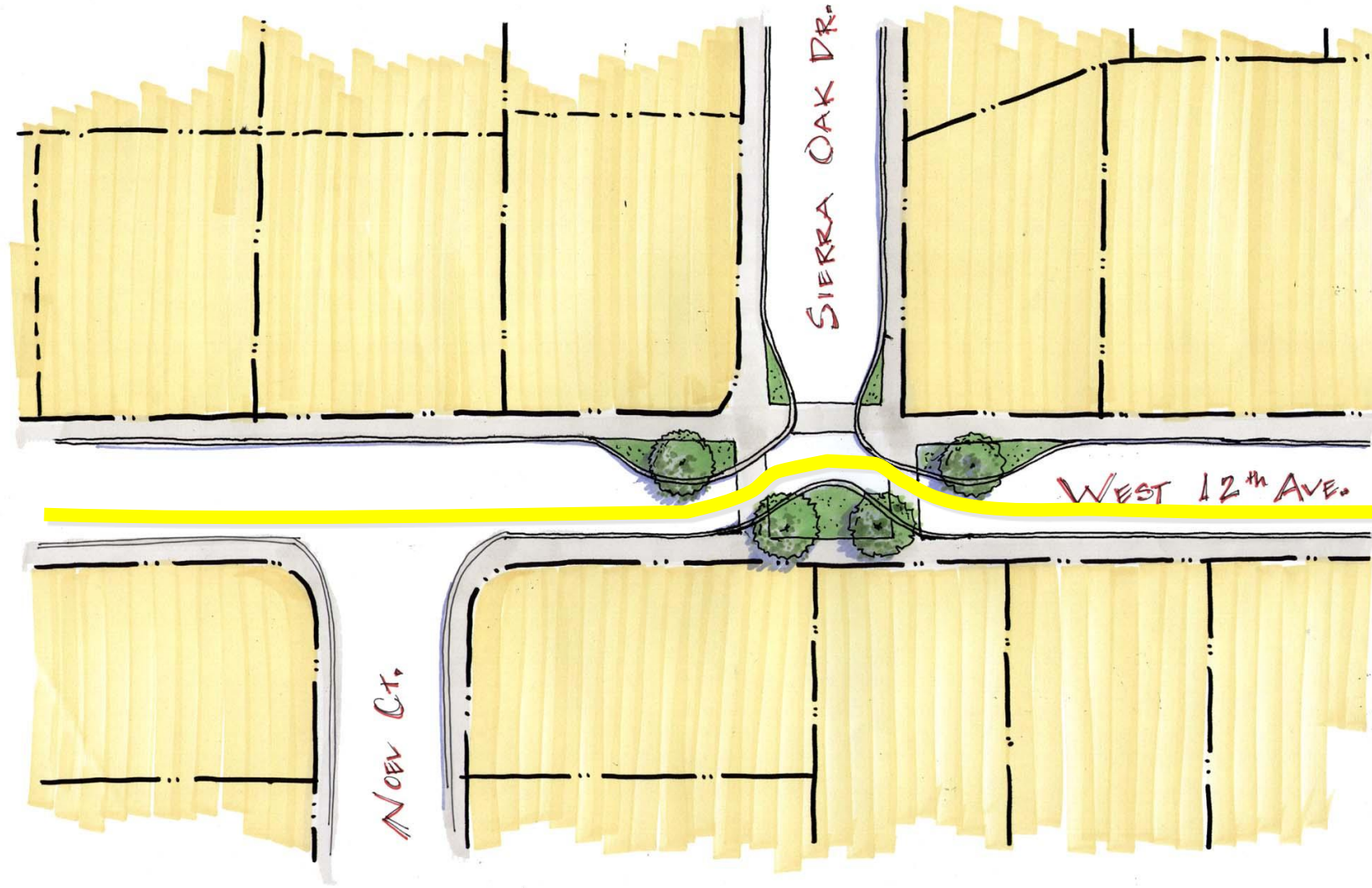


Well placed trees increase the visibility of signs



Well placed trees increase the visibility of signals

Modified Tee Intersection

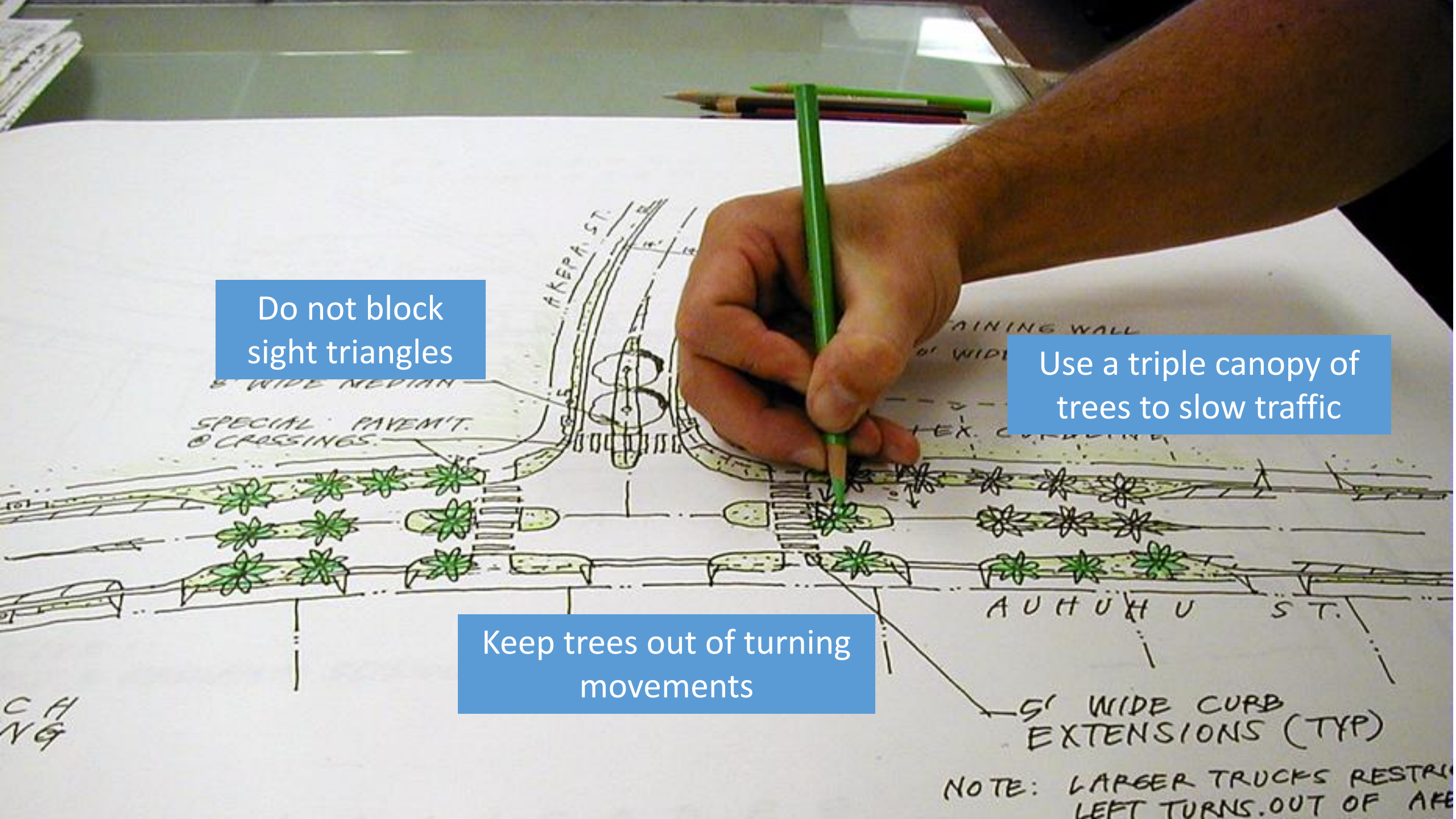


West Twelfth Avenue

Do not block sight triangles

Use a triple canopy of trees to slow traffic

Keep trees out of turning movements





PARKING LOTS



Consider a 15-25% requirement for shading parking lots, helping with water percolation, placemaking and reducing heat island effects.

TOOLS FOR PARKING LOTS



Parking lots can deaden walking spaces. Edges to the street and parking lots should screen and protect people on foot, adding to the charm of a town.

Tap into the town branding themes, and make wayfinding an easy way to help fill off-street parking, especially for big shopping days.

A minimum landscaping requirement should be adopted. Many cities insist on greening 15% of the lot.

IMAGE LOCATION: SEATTLE, WASHINGTON



NO RESERVANT
PARKING
IN RESERVED
SPACES

44-66 Club Road







What Comes Next?

States and cities across the country are beginning to embrace trees as critical infrastructure in urban areas. Neighborhoods with tree cover are significantly cooler than exposed areas known as “heat islands,” which can affect human health and utility bills. Urban forests absorb stormwater runoff, filter pollution from the air and sequester carbon.

https://www.pewtrusts.org/en/research-and-analysis/blogs/stateline/2022/08/25/towns-may-grow-millions-more-trees-with-15b-for-urban-forestry?utm_source=Sightline%20Institute&utm_medium=web-email&utm_campaign=Sightline%20News%20Sections



SEATTLE — Last year, legislators in Washington state passed a law to bolster the urban forestry work of the Department of Natural Resources. The agency's urban and community forestry program, which had just two staffers in 2020, will grow to nine positions once the department finalizes new hires. Those new staffers, along with a new state-funded grant program, will supercharge the department's efforts to inventory tree canopy in Washington's communities, help cities maintain their trees and determine where to plant new ones.

https://www.pewtrusts.org/en/research-and-analysis/blogs/stateline/2022/08/25/towns-may-grow-millions-more-trees-with-15-b-for-urban-forestry?utm_source=Sightline%20Institute&utm_medium=web-email&utm_campaign=Sightline%20News%20Selections





Towns May Grow Millions More Trees with \$1.5B for Urban Forestry

The Inflation Reduction Act, signed into law last August by President Joe Biden, includes \$1.5 billion for the U.S. Forest Service's Urban and Community Forestry Program, which supports efforts ranging from big cities to small communities. Agency leaders say the funding, which will be allotted through competitive grants, will be focused on reaching neighborhoods that lack green infrastructure and are bearing the brunt of climate change.

"These dollars are designed for the most vulnerable, for underserved and under-resourced communities," said Beatra Wilson, who oversees the Forest Service program. "We anticipate rising to that occasion."

Action Steps:

1. Set a planting goal (percent of the city's ground shaded by trees)

- Toronto has set a 40 per cent target by 2050,
- Vancouver set a 30 per cent target for the same year and
- Guelph, Ont. set a 40 per cent target by 2031

Photo: Mike Deal / Winnipeg
Free Press



Action Steps:

- **Fund a local tree Nursery**
Forester Martha Barwinsky stands among young trees at the Winnipeg civic nursery, where the city is growing a more diverse set of trees to replace the ash and elm monocultures. Barwinsky says best practice would mean no species of tree making up more than 10 per cent of the urban forest.

Photo: Mike Deal / Winnipeg Free Pres





<https://thenarwhal.ca/tree-planting-urban-forests-winnipeg/>

