

Mesa AZ
Central Main Extension
Business Assistance Program
2011-2015



Partners



Central Main Extension

Event	Schedule
Environmental Assessment	Summer 2009-Summer 2011
Business Assistance Program	Summer 2011-Fall 2015
Design	2010-2012
Construction Starts	2012
Opening of extension	August 2015



21 consultants- experts in their field

General Business	Marketing	Financial	Specialty
Accounting HR Org. Development IT systems Cost analysis	Planning Print Design Video Social Media Façade Window display No funds could be spent on advertising	QuickBooks Financial reporting Loan Packaging Risk Management Lease negotiations	Restaurant Liquor Hispanic marketing Collective buying Tax reporting

Weekly 1 hour workshops (education and networking)

Attend 4 a year, get electric rebate in summer months

Merchant meeting

Hispanic Business Alliance

Restaurant meeting

Retail meeting

Opportunity to sign up for one on one consulting

ASU ARIZONA STATE
UNIVERSITY

POLYTECHNIC CAMPUS





Neighborhood Economic Development Co Presents

Reunión de la Asociación de Negocios Latino, presenta Ray Villa

Monthly Latino Business Association Meeting w/ Ray Villa

Esta es la reunión mensual de la Asociación de Negocios Latino

This is the monthly meeting for the Association of Latino Businesses

Every 2nd Tuesday at 9am.

@ Pedritos 311 W Main St. Mesa

Martes 10 de marzo por 9am

Tuesday, March 10 at 9am



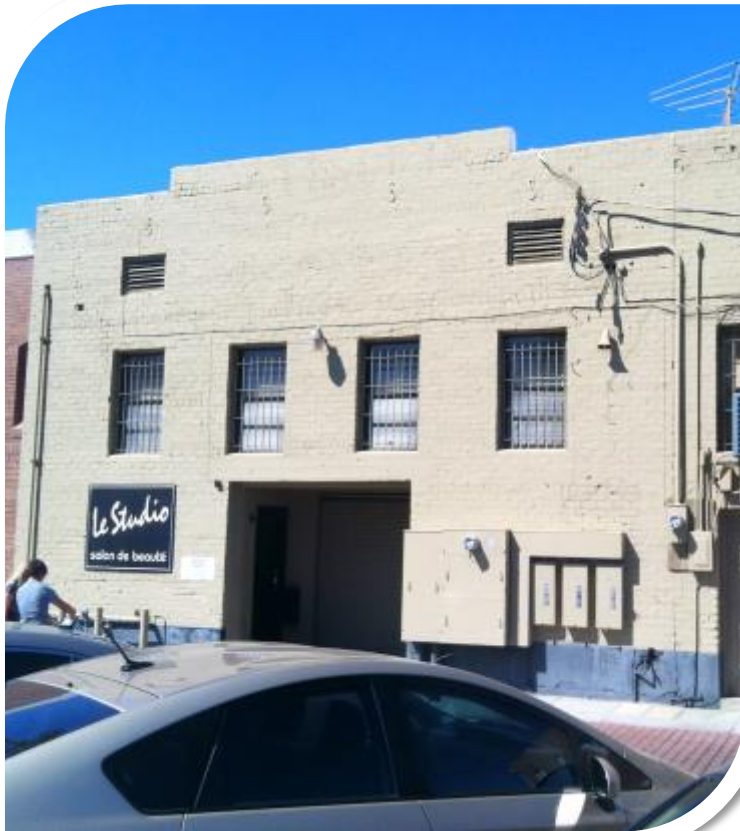
10 West Main Street Mesa, Arizona
P | 480-258-6927 F | 480-464-5817
nedco-mesa.org

26 grants
Google Inside View
Local First Arizona
Small Wonders map
and membership to
LFA
Splash page



Over 50 businesses
with Google inside
view
Mesa- beta site for
product

Activate the Alleyway



\$60,000 grant

\$252,000 investment

18 businesses



Bike Audit

Walking audit



Mayor Scott Smith's

Mesa Urban Development SUMMIT

presented by

JPMORGAN CHASE & CO.



NEAR THE LIGHT RAIL.....4

Projects should ideally be within ¼ mile of a light rail station, and no more than ½ mile from one.



CONNECTED TO NEIGHBORHOODS.....5

Developments should provide safe and inviting routes for walking, biking and transit of all kinds. These routes and pathways give quick and easy access to nearby amenities.



PROVIDE HOUSING CHOICES.....6

Housing should appeal to all income levels and offer choices for all family types and individuals.



COMPACT DEVELOPMENT7

Developments support light rail and provide the added housing, office space, retail and other uses to support a healthy community and economy.



COMMUNITY PARTICIPATION.....8

Developers and cities engage the community in the planning and decision making process, ensuring that projects meet the needs, values and desires of the community.



DESERT FRIENDLY DESIGN.....9

Projects should be designed with the local environment in mind, and should use water and energy carefully.

If you knew it, you'd do it!



downtown
MESA

If you knew it, you'd do it!



Mesa Urban Garden



LISC Phoenix's activities focus on creating healthy communities along transit corridors in Phoenix, Tempe and Mesa. We believe there is urgency and need to focus on these opportunities.

www.lisc.org/phoenix

Terry Benelli

Tbenelli@lisc.org

602-252-6313